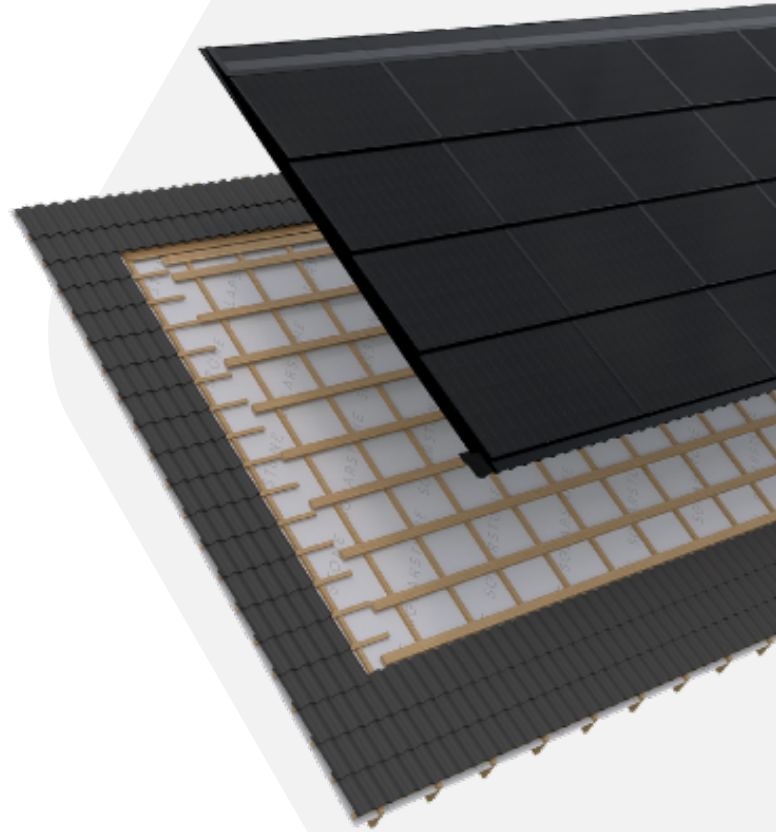


## Solar Full Roof™ Power Set

Solar roofs are becoming standard, but most homes still treat solar as an add-on. SOLARSTONE integrates solar directly into the roof structure - simplifying installation, reducing energy costs, and providing stability against rising utility prices. One complete system. Faster build. Cleaner result.

### SOLAR PEAK POWER

8.6 kWp | 6.8 kWp | 5.2 kWp  
Large | Medium | Small



#### PRESERVE ROOF INTEGRITY

No drilling into rafters, preserving structural integrity and lasting weatherproofing.

#### FAST & EFFECTIVE INSTALLATION

Follows traditional roofing practices, allowing installation by a single roofing team.

#### LIGHTWEIGHT ON CONSTRUCTION

16 kg/m<sup>2</sup> lightweight 2-in-1 solar roofing lowers structural load.

#### BUILDING ENERGY CLASS UPGRADE

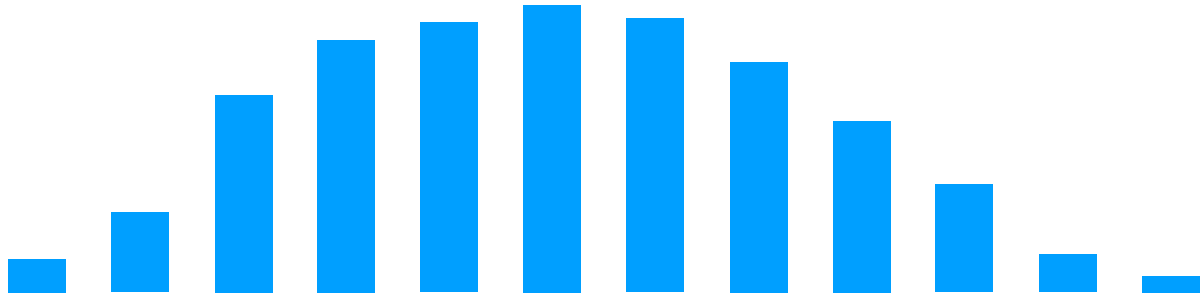
Achieve a higher energy class without costly upgrades or design compromises.

#### FOR NEW BUILDS OR ROOF RENOVATIONS

Cost-effective solar roofing for new construction or roof upgrades.



Refer to the **Solar Full Roof™** Technical Datasheet for detailed BIPV module specifications



Yearly in-plane irradiation ~1350 kWh/m<sup>2</sup>, system loss 0%, south faced, slope 35°

kwh/yr	Jan	Feb	Mar	Apr	May	Jun	Jul	Aug	Sep	Oct	Nov	Dec	Total
8.6 kWp	339	536	880	1171	1290	1270	1263	1163	991	726	437	335	10 401
6.88 kWp	271	429	704	937	1032	1016	1010	930	793	580	350	268	8 320
5.16 kWp	203	322	528	702	774	762	757	698	594	435	262	201	6 238

WORKING CONDITIONS	
Efficiency	215 W/m <sup>2</sup>   22%
Operating temp	-40°C to +85°C
EN Standards Compliance	EN 61215:2021 - Design Qualification
	EN 61730:2023 - Safety Qualification
	Electrical Safety: Class II
	Fire Class: Class C
	Hail Resistance: Ø 25 mm at 83 km/h
Fire Certification	Snow load: 5400 Pa (~550 kg/m <sup>2</sup> )
	Wind load: 2400 Pa (~224 kg/m <sup>2</sup> )
	EN 13501-5:2016 - Broof t1
CE Compliance	EN 13501-5:2016 - Broof t2
Performance Warranty	DoC by Solarstone & FuturaSun
Product Warranty	30 years for BIPV components
Designed & assembled	20 years for BIPV components
	Estonia, European Union

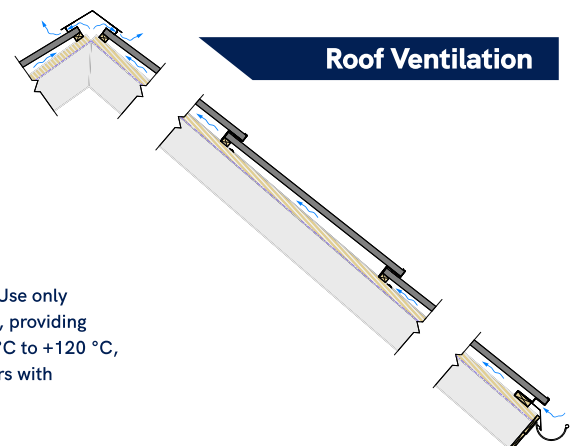
VARIATIONS	
SKU	SPS-A121211.8.6kW
Solar Peak Power	8.6 kWp
BIPV layout	5 columns x 4 rows
Exposed area	8,815 x 4,615 mm (~40 m <sup>2</sup> )
Weight	~600 kg; ~16 kg / m <sup>2</sup>
SKU	SPS-A121211.6.8kW
Solar Peak Power	6.8 kWp
BIPV layout	4 columns x 4 rows
Exposed area	7,060 x 4,615 mm (~35 m <sup>2</sup> )
Weight	~560 kg; ~16 kg / m <sup>2</sup>
SKU	SPS-A121211.5.1kW
Solar Peak Power	5.1 kWp
BIPV layout	4 columns x 3 rows
Exposed area	7,060 x 3,475 mm (~25 m <sup>2</sup> )
Weight	~400 kg; ~16 kg / m <sup>2</sup>



**YouTube**  
Watch the installation of Solar Full Roof™

### IMPORANT:

Please read safety and installation instructions before using the product. Use only underlayment membranes specifically designed for PV panel installations, providing watertightness, UV resistance, and suitability for temperatures from -40 °C to +120 °C, in accordance with the EN 13859-1:2014 standard. Use only with inverters with Arc-Fault Circuit Interrupter (AFCI).



# Roof. Design. Power.

